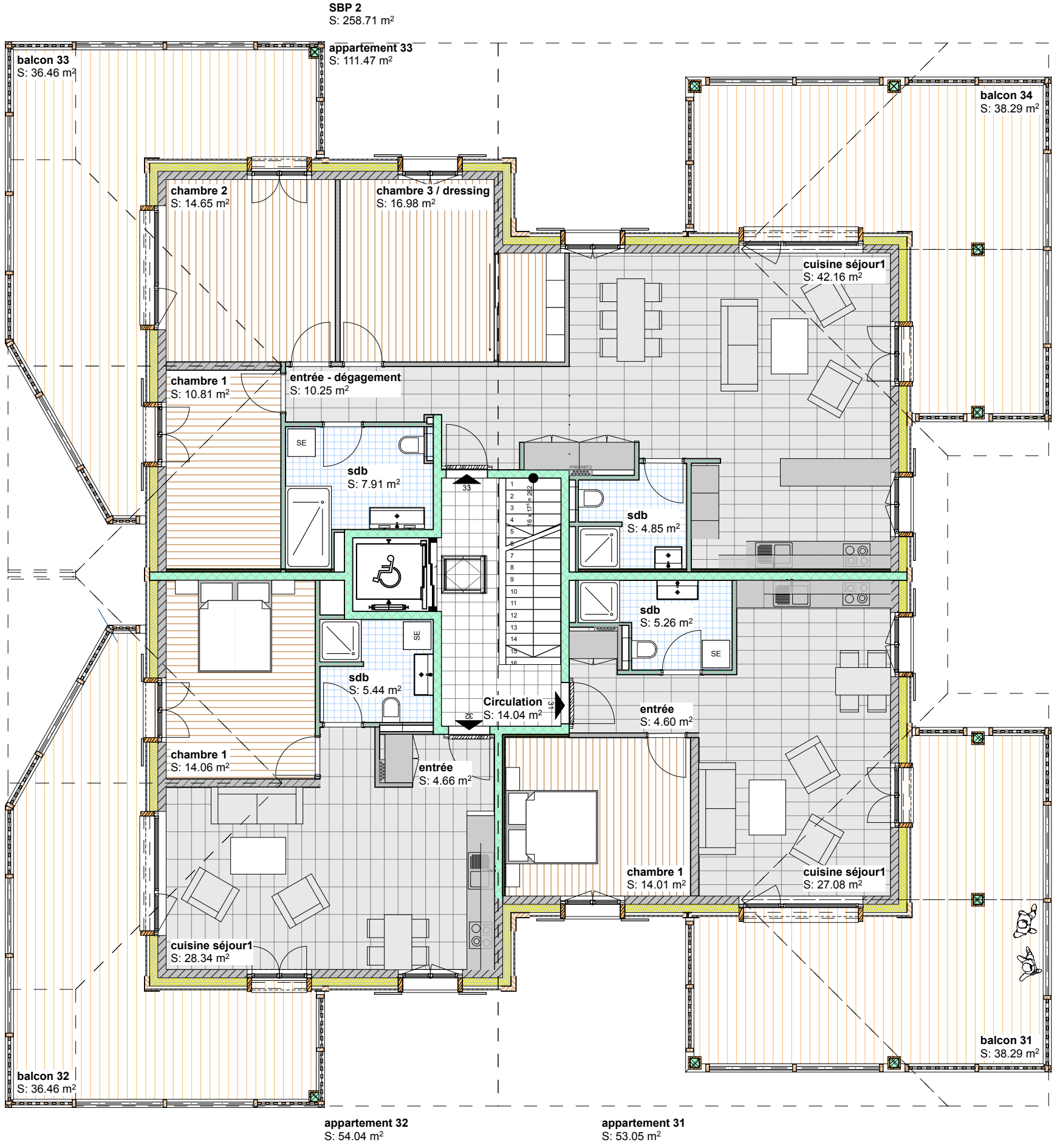
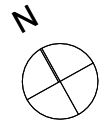


APS-02
Plans
La Louennaz - Torgon

Etage 2

PLAN N°
APS-02.3
1:100
11.12.16



SBP 2
S: 258.71 m²

appartement 33
S: 111.47 m²

balcon 34
S: 38.29 m²

balcon 33
S: 36.46 m²

chambre 2
S: 14.65 m²

chambre 3 / dressing
S: 16.98 m²

cuisine séjour1
S: 42.16 m²

chambre 1
S: 10.81 m²

entrée - dégagement
S: 10.25 m²

sdb
S: 7.91 m²

sdb
S: 4.85 m²

sdb
S: 5.26 m²

sdb
S: 5.44 m²

Circulation
S: 14.04 m²

entrée
S: 4.60 m²

chambre 1
S: 14.06 m²

entrée
S: 4.66 m²

chambre 1
S: 14.01 m²

cuisine séjour1
S: 27.08 m²

cuisine séjour1
S: 28.34 m²

balcon 31
S: 38.29 m²

balcon 32
S: 36.46 m²

appartement 32
S: 54.04 m²

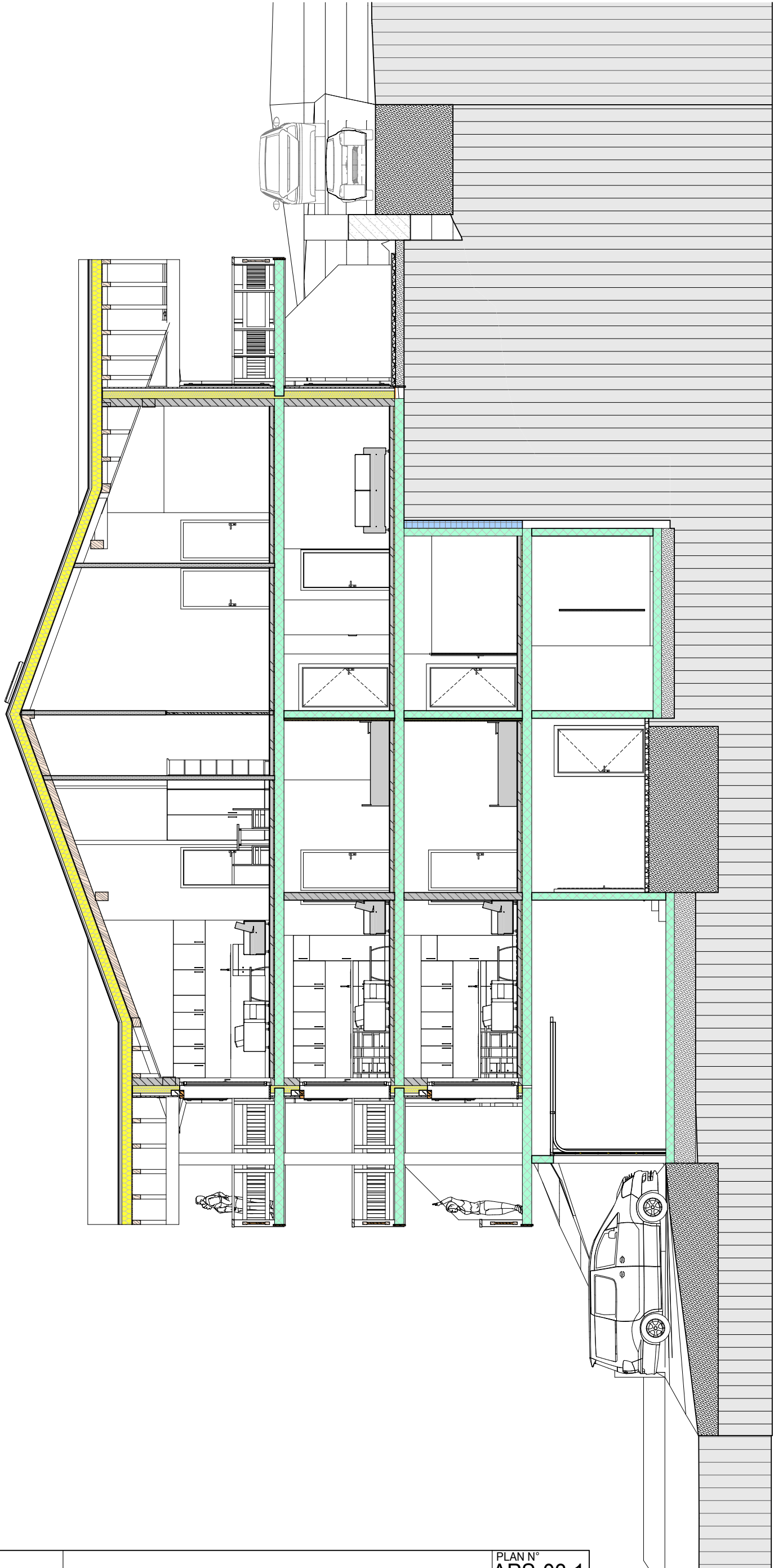
appartement 31
S: 53.05 m²



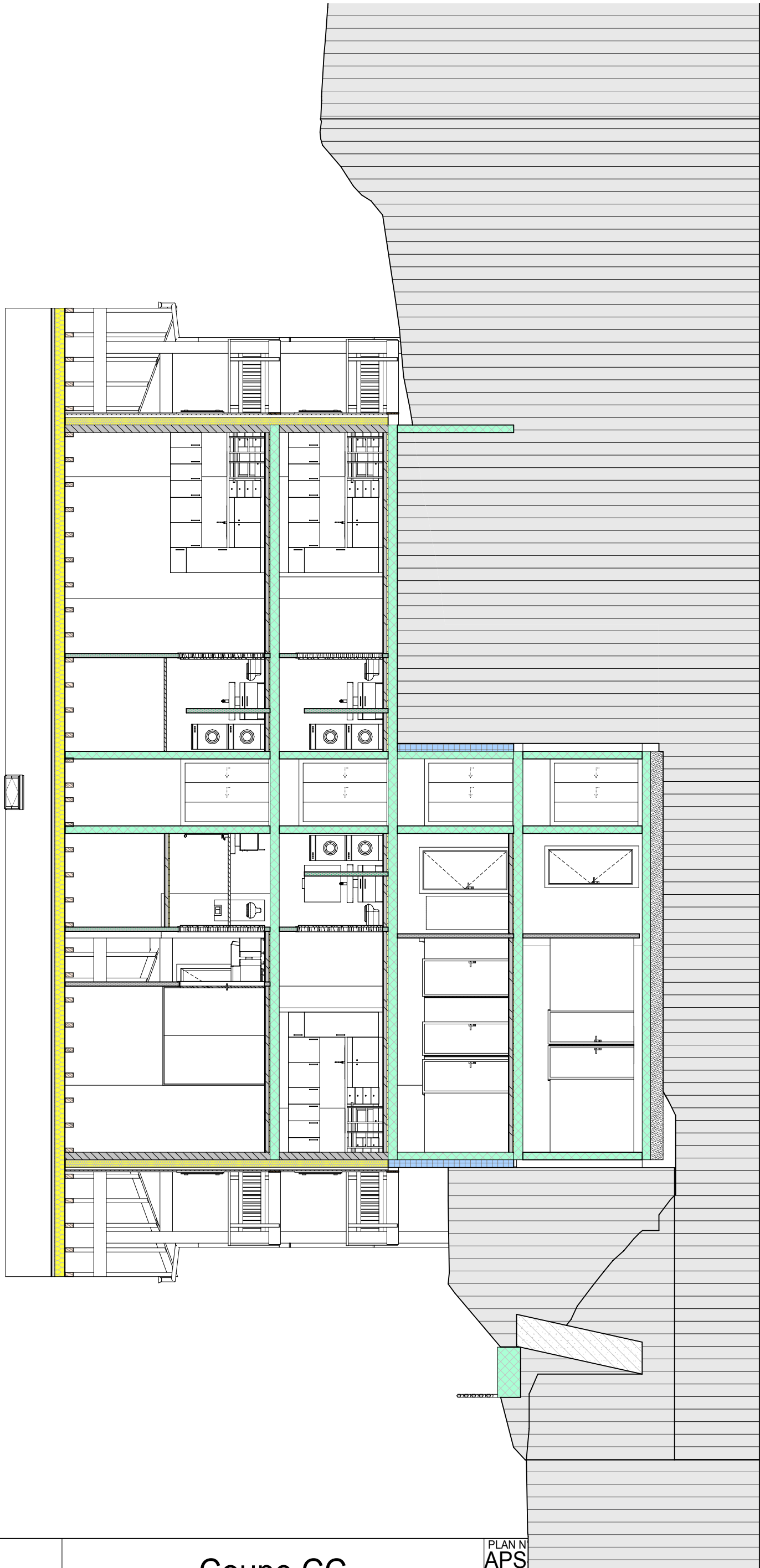
APS-02
Plans
La Louennaz - Torgon

Etage 3

PLAN N°
APS-02.4
1:100
11.12.16











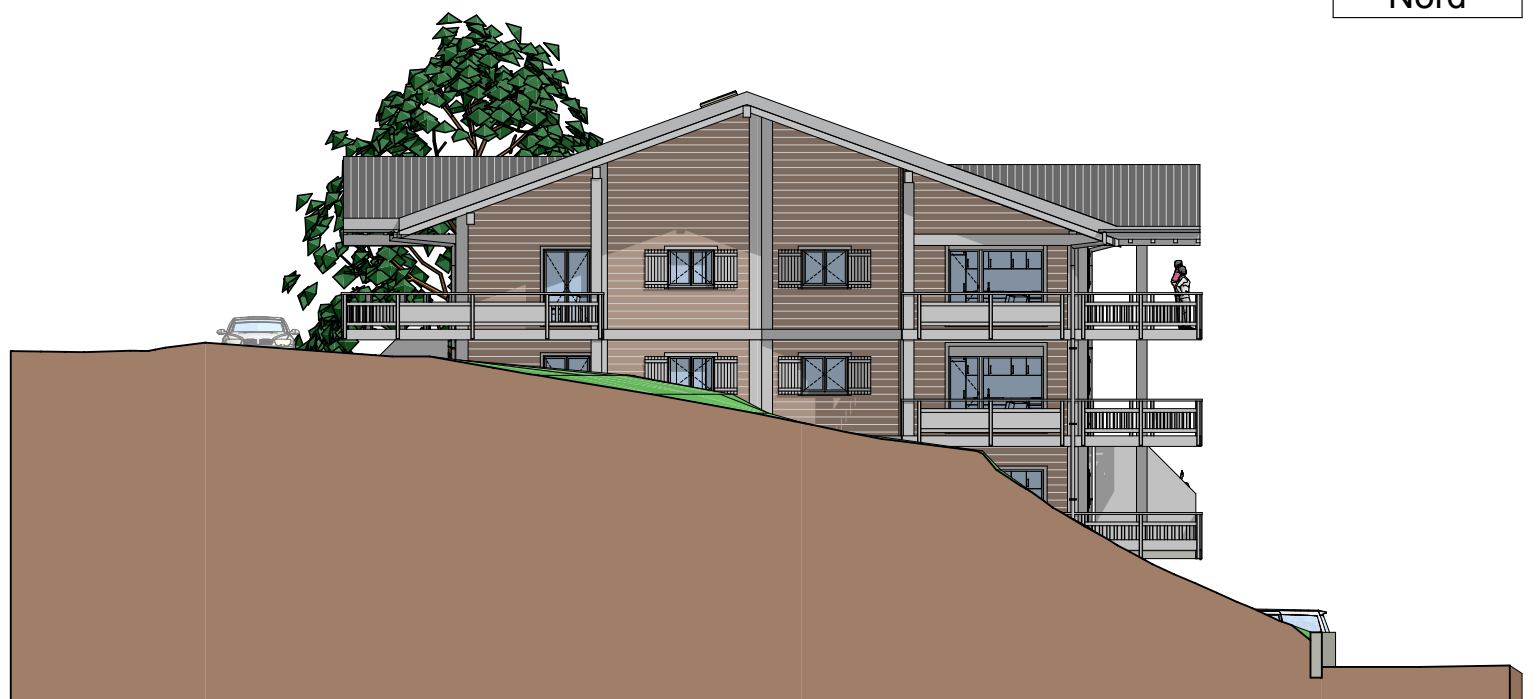
Est



Ouest



Nord



Sud